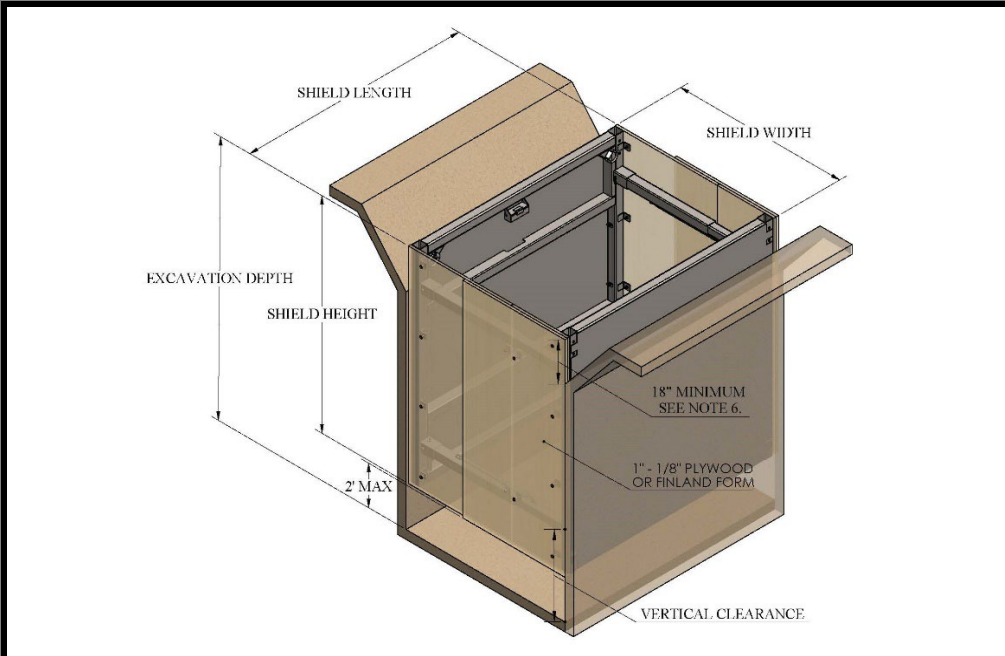


EX-MANHOLE BOX TABULATED DATA

265 Roberts Ave, Ste 1.
Santa Rosa, CA 95407

Model Number:	12.3 PS-4L-68-SW-PLY	Wall Thickness:	4"	Pressure Rating (psf):	1305
Serial Number:	PS22226	Cylinder Size:	2"	Shield Weight (lbs.):	2392
Height:	6'	Cylinder Capacity:	23 ksi		
Length:	8'	Cylinder Stroke:	2'		



Soil Type	Depth Rating
A - 25	25
B - 45	25
C - 60	20
C - 80	16


 SIGNED - 5/16/2022

NOTES & LIMITATIONS:

- 1) This document has been prepared by a Registered Professional Engineer (P.E.), as required by OSHA standard 29 CFR, Part 1926, Subpart P Excavations and Trenches.
- 2) Shields shall be used under the supervision and direction of a Competent Person, who is educated and trained in the use of shoring shields, and has experience in the field with shield use, OSHA soil type classification, and recognizing hazardous
- 3) Shields must be used in strict compliance with all applicable OSHA guidelines, and limitations outlined in this document. Failure to do so can result in serious injury or death.
- 4) Shields shall be inspected prior to each use, to ensure they are in good condition, free of any damage or visual defects.
- 5) Soil shall be classified by a Competent Person as type A, B, C, as defined by OSHA regulations.
- 6) Soils shall be sloped in accordance with OSHA Subpart P. and must extend to no less than 18" below the top of the shoring shield. Shield needs to extend above soil when adjacent soils are flat and level with top of shield.
- 7) Shield shall be installed in a manner to restrict lateral or other hazardous movement of the shield in the event of the application of sudden lateral loads.
- 8) Pacific Shoring Products Shields may be stacked, if appropriate connections are made between the stacked shields to prevent lateral movement.
- 9) Prior to shield use all spreaders shall be secured to sockets with pins, or other mechanical connections, that are approved by the manufacturer. Do not apply side load to the spreaders at any time (such as leaning plates for soil support), unless approved in writing by P.E.
- 10) Competent person must ensure surcharge limits and equipment setbacks are maintained at all times, unless approved in writing by a P.E.
- 11) The above depth ratings allow a 100 PSF surcharge load. Equipment and spoil piles should be set back a minimum 2 ft. from the edge of the excavation.
- 12) The box may be held 2 ft. above the bottom of the excavation.
- 13) Any repairs or modifications to the trench box shall be approved by the manufacturer or RCE.