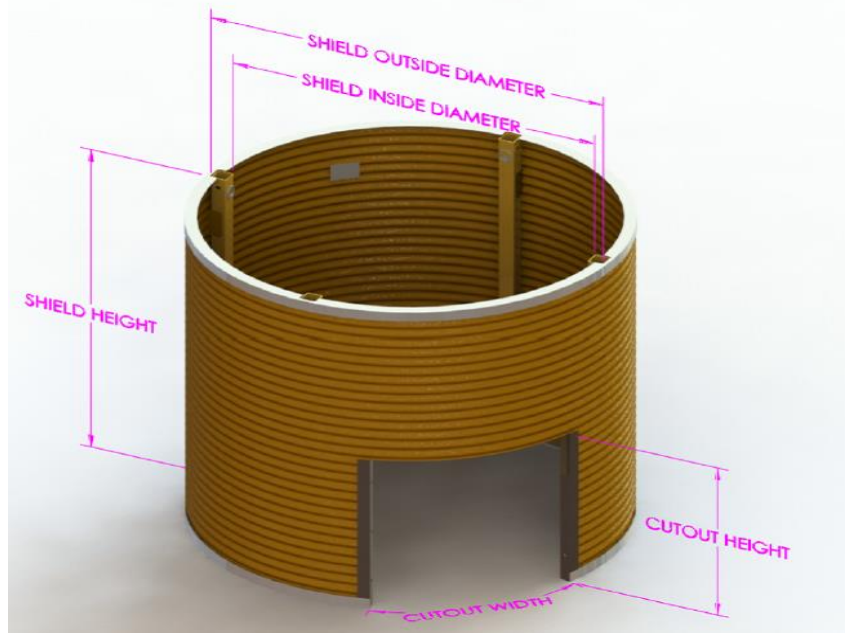


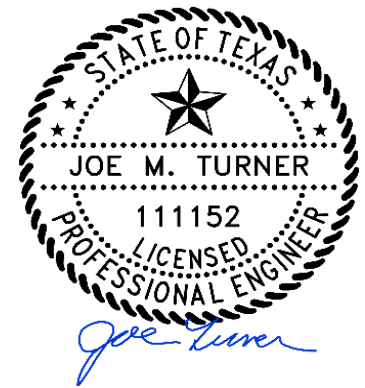
**ROUND MANHOLE SHIELD
TABULATED DATA**

5385 Bay Oaks Dr.
Pasadena TX 77505

Model Number:	04.RMH-8.5D-8T	Pressure Rating:	1,920 PSF
Serial Number:	PS24049	Pin Diameter:	1"
Height:	8'	Pin Yield Strength:	90 KSI
Outside Diameter:	8.5'	Manufacture Date:	3/21/2024
Inside Diameter:	7.9'		



SOIL TYPE	DEPTH RATING
A-25	33'
B-45	33'
C-60	33'
C-80	20'



Signed on 3/21/2024

NOTES & LIMITATIONS:

- 1) This document has been prepared by a Registered Professional Engineer (P.E.), as required by OSHA standard 29 CFR, Part 1926, Subpart P.
- 2) Round Manhole Shields shall be used under the supervision and direction of a Competent Person, who is educated and trained in the use of shoring shields, and has experience in the field with shield use, OSHA soil type classification, and recognizing hazardous conditions.
- 3) Round Manhole Shields must be used in strict compliance with all applicable OSHA guidelines, and limitations outlined in this document. Failure to do so can result in serious injury or death.
- 4) Round Manhole Shields shall be inspected prior to each use to ensure they are in good condition and free of any damage or visual defects.
- 5) Soils shall be sloped in accordance with OSHA Subpart P. and must extend to no less than 18" below the top of the shoring shield. Shield needs to extend above soil when adjacent soils are flat and level with top of shield.
- 6) Soil shall be classified by a Competent Person as type A, B, C, as defined by OSHA regulations.
- 7) Pacific Shoring Water Tap Shields may be stacked utilizing Pacific Shoring Water Tap stacking pins and providing the allowable depth ratings for each Water Tap Shield is not exceeded.
- 8) When cutouts are not being used, all openings shall be filled with Pacific Shoring supplied cover panels approved by the manufacturer.
- 9) Round Manhole Shields shall be installed in a manner to restrict lateral or other hazardous movement of the shield in the event of the application of sudden lateral loads.
- 10) Competent person must ensure surcharge limits and equipment setbacks are maintained at all times, unless approved in writing by a P.E.

