

HYDRAULIC VERTICAL SHORING HANGER BAR
TECHNICAL DATA SHEET
Effective March 11th, 2025

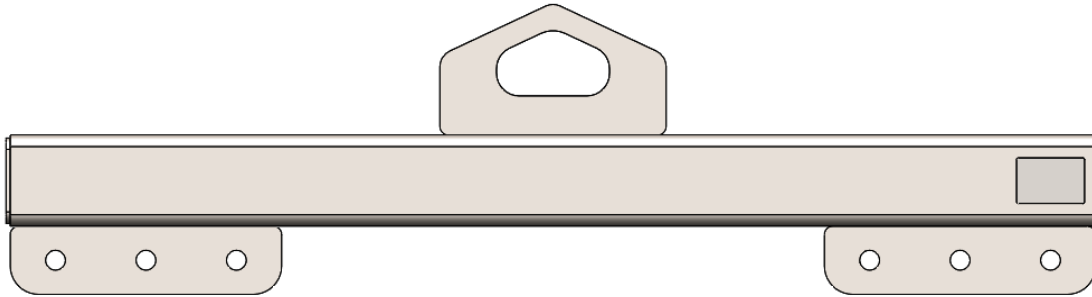


Table 1. HVS Hanging Bar Specifications		
Model Number	Weight (lbs.)	Load Capacity (lbs.)
11.ACC-HANGER-24	40	3,738
11.ACC-HANGER-36	52	2,492
11.ACC-HANGER-48	67	1,869
11.ACC-HANGER-60	107	1,974
11.ACC-HANGER-72	125	1,645
11.ACC-HANGER-96	161	1,234



Signed 3/11/2025

Table 1. Usage Notes:

1. The Pacific Shoring Products Hydraulic Vertical Shoring Hanging Bar must always be used in a level and stable manner to ensure proper load distribution and operational safety. Users should verify that the bar is securely positioned and adequately supported before applying any load. Failure to maintain level positioning may result in instability, reduced effectiveness, or potential safety hazards. Always follow manufacturer guidelines and conduct a thorough inspection before use.
2. The Competent Person is responsible for accurately determining the total lift weight and selecting the appropriate lifting chains, cables, or slings, ensuring they meet or exceed a 5:1 safety factor for secure and reliable lifting operations.
3. The maximum allowable load is determined using static loads,
 - a. The Hydraulic Vertical Shoring Hanging Bar is not intended to support any excavation loads, live loads, impact loads, surcharges, etc.
 - b. Equipment that is stuck or wedged can increase the load applied to the attachment to well above the actual shield weight. Always exercise caution when dislodging stuck or wedged equipment.